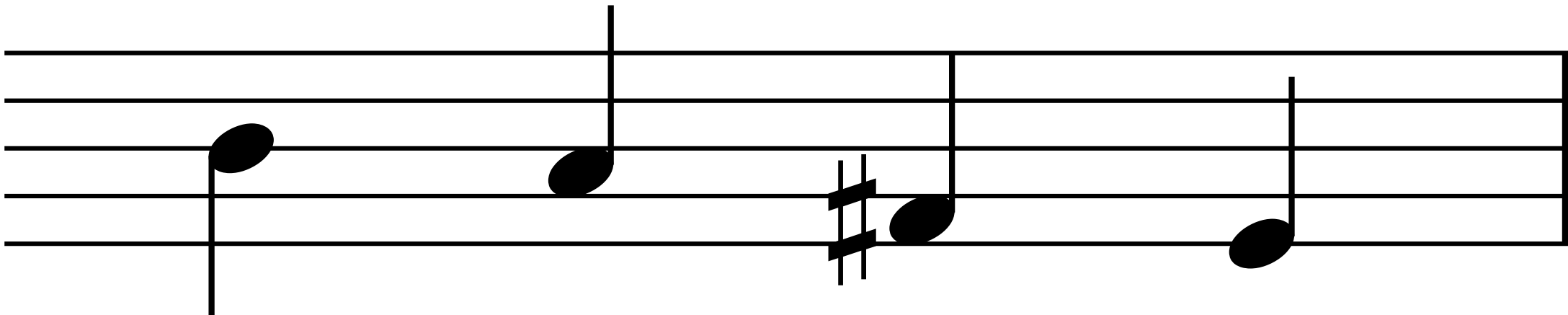
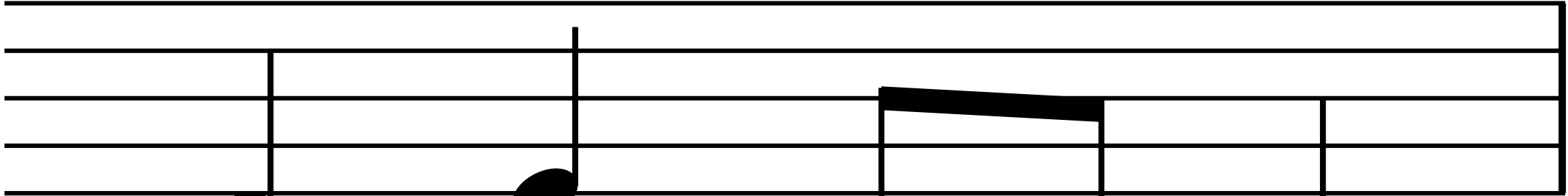


A musical staff in 4/4 time with a treble clef. The staff contains four quarter notes: C4 (first line), E4 (second line), F#4 (second space with a sharp sign), and D4 (third space). The notes are connected by a horizontal line. Below the staff, the number '1' is positioned under the first note (C4) and the number '2' is positioned under the third note (F#4).



3

4



5

6

7

A musical staff with five horizontal lines. The notation consists of four notes: a quarter note on the second line, a quarter note on the second space, a quarter note on the second space with a beamed eighth note on the second line, and a quarter note on the second space. Below the staff, the number '8' is positioned under the first note, and the number '9' is positioned under the fourth note. The staff ends with a double bar line on the right side.