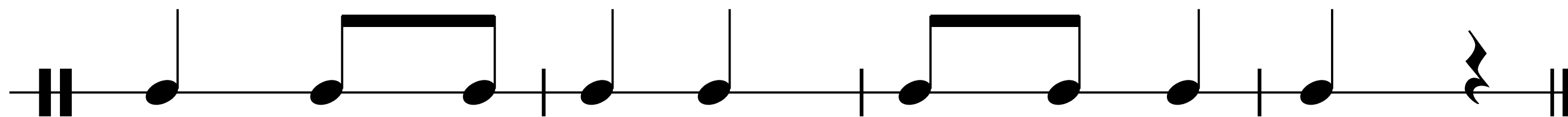


ZNÁM JED-NU DÍV - KU,



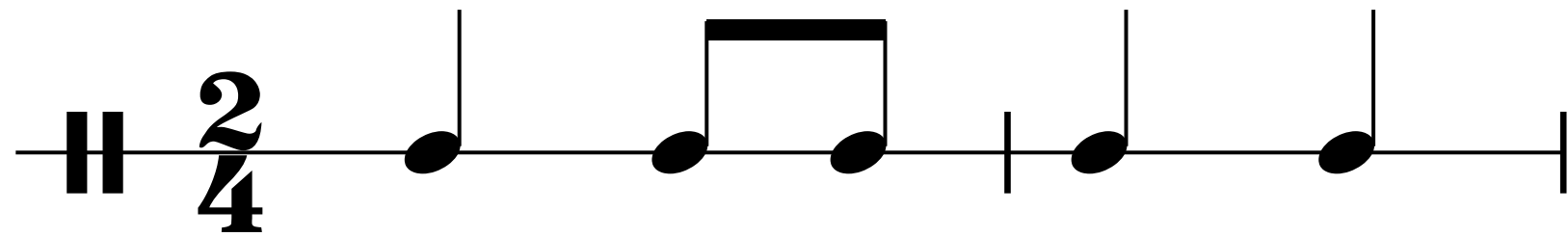
TA

MÁ

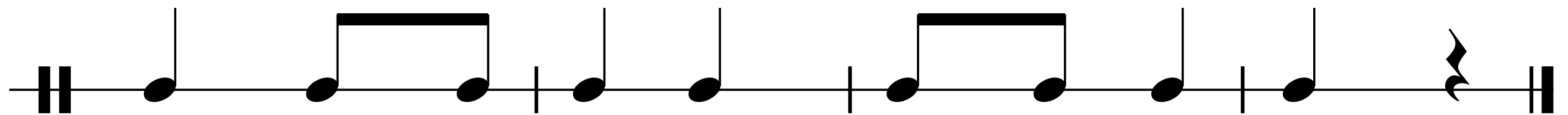
DU - KÁ - TY,

MÁ

DU - KÁ - TY.



ZNÁM JED-NU DÍV - KU,



TA

MÁ



MÁ



2
4

A CHA - LU - PU, A CHA - LU - PU

DO - STA - NE OD TÁ - TY.

2/4

A

A

The first staff of music is written on a single-line staff. It begins with a double bar line, followed by the time signature 2/4. The first measure contains two eighth notes, and the second measure contains two eighth notes. Below the staff, there are two rectangular boxes, each containing three horizontal lines. The letter 'A' is placed to the left of each box. The staff ends with a double bar line.

DO - STA - NE OD TÁ - TY.

The second staff of music is written on a single-line staff. It begins with a double bar line, followed by two eighth notes, then two eighth notes, a quarter note, a quarter note, and a quarter note with a fermata. The staff ends with a double bar line. Below the staff, the lyrics "DO - STA - NE OD TÁ - TY." are written in a serif font, with hyphens under the syllables.

2
4

DVĚ **KRÁ-VY** MÁ A HEZ-KÉ **TE-LÁT-KO,**

DVĚ **KRÁ-VY** MÁ, A - HA!

2/4
DV_ MÁ A HEZ-K_

DV_ MÁ, A - HA!

A NO-VOU **AL - MA - RU** A NO-VOU,

NO-VOU **AL - MA - RU.**

2/4

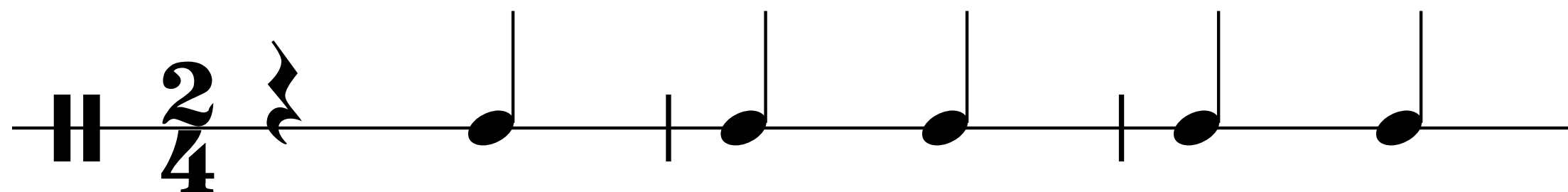
A NO-V_ _ _ _ A NO-V_,

NO-V_ _ _ _

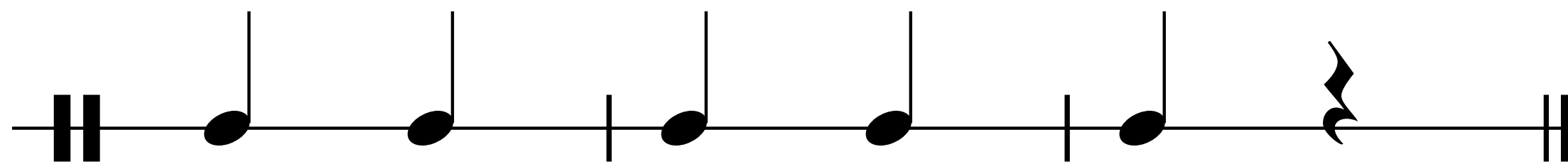
2
4

NO TO BY BY - LO

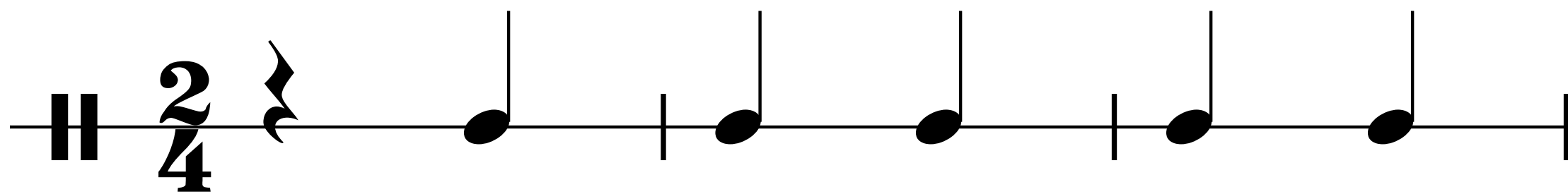
NĚ - CO **KU ZDA - RU!**



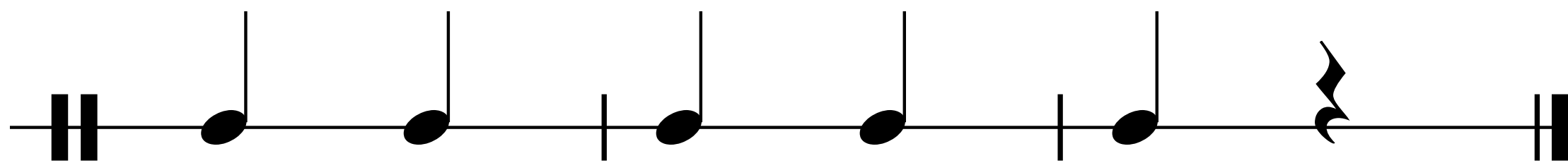
NO TO BY BY - LO



NĚ - CO KU ZDA - RU!



NO TO BY BY - LO



NĚ - CO

